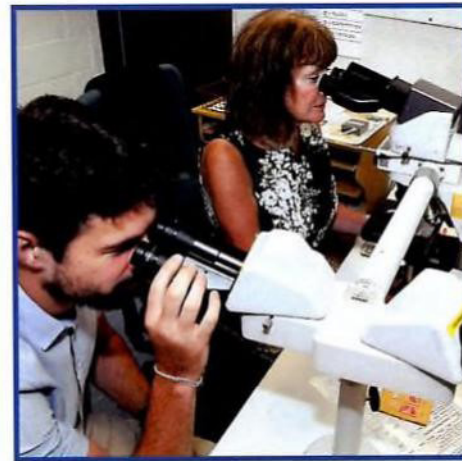


St George's Academic Training (GAT) handbook



Welcome to St George's and your guide to Integrated Academic Training at St George's, University of London and St George's University Hospitals NHS Foundation Trust

This guide has been designed to signpost useful contacts and current procedures. For further information on any aspect of IAT please contact the George's Academic Training (GAT) team:

Professor Nidhi Sofat, Consultant Rheumatologist, Integrated Academic Training (IAT) Lead

nsofat@sgul.ac.uk

0208 725 0042

Yvonne Forde, GAT Administrator

yforde@sgul.ac.uk

0208 725 5371

Dr Mathew Paul, Researcher / Scientist, Course Leader PGCert Healthcare Research Skills and Methods

mpaul@sgul.ac.uk

020 8725 5667

The GAT team has oversight of current clinical medical academic training schemes, manages bursaries for NIHR funded trainees, co-ordinates the NIHR bidding round and supports/develops the research training programme and initiatives.

At St George's you will be part of a community of academic trainees with workshops guided by trainee's needs/requests, newsletters and links to training opportunities and university events.

The GAT website contains general information about academic training including the Gold guide, NIHR resources, Oriol applications and information about SGUL's research institutes, access to postgraduate training degrees at SGUL and trainee testimonials about their research experiences at St George's.

Professor Jenny Higham
SGUL Vice Chancellor



Jacqueline Totterdell
St George's Executive Chief



About us

[St George's, University of London \(SGUL\)](#) is the UK's only independent medical and healthcare higher education institution. SGUL is a modern, innovative academic and research organisation built upon a rich history stretching back 250 years.

Alumni include John Hunter, known as the father of modern surgery, and Edward Jenner, creator of the first vaccine, used to eradicate smallpox.



John Hunter

13 February 1728 – 16 October 1793



Edward Jenner

17 May 1749 – 26 January 1823

We share a site with [St George's Hospital](#), one of the UK's largest teaching hospitals. Our smaller size lends a genuine community feel – students and staff can walk the corridors of our facilities from clinical teaching room to laboratory to hospital ward or clinic.

Our [Institute of Medical, Biomedical and Allied Health Education](#) is the focus of SGUL's undergraduate and postgraduate medical and biomedical programmes. IMBAE's academic staff come from a range of professional disciplines and are often active researchers, affiliated to SGUL's three research institute. They all share a common commitment to our students and ensuring the educational experience they receive is second to none.

Research work at SGUL is focused within four research institutes:

- [Cardiovascular and Genetics Research Institute](#)
- [Neurosciences and Cell Biology Research Institute](#)
- [The Institute for Infection and Immunity](#) is driving improvements in healthcare through its extensive programmes of research on globally important pathogens, immune system function and immune responses to infection and chronic disease.
- [The Population Health Research Institute](#) uses routine health statistics, together with results from health surveys and controlled trials, to measure the burden of disease in communities, to explore causes of ill-health and to inform policies for prevention.

St George's University Hospitals NHS Foundation Trust (St George's Trust)

[St. George's University Hospitals NHS Foundation Trust](#) is the regional specialist care provider for south west London, Surrey and beyond. The Trust provides a high quality, comprehensive range of health services from leading edge tertiary and trauma care to community services. With national and regional referrals added to the local 3.5 million person catchment, the Trust serves a population of around five million.

Co-located with St George's, University of London, the Trust delivers with its partners high quality research and education both of which contribute to the healthcare provision of tomorrow.

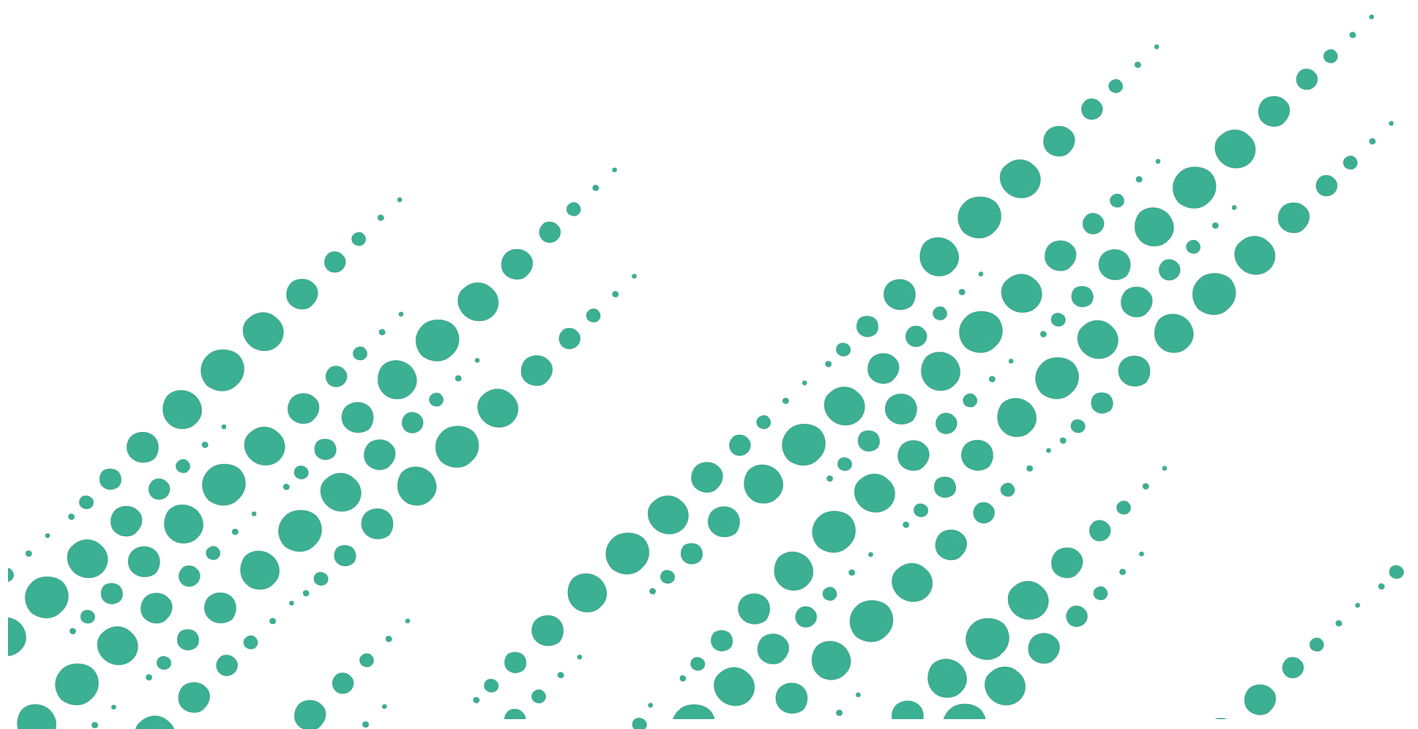
Acute and tertiary health services are delivered from over 1,000 beds across two sites, by around 8,000 staff.

St. George's Trust runs a major acute hospital that offers specialist care for complex injuries and illnesses, including trauma, neurology, cardiac care, renal transplantation, cancer care and stroke. It has a helipad which opened in spring 2014 and the work of its emergency department can be seen on Channel 4's '24 Hours in A&E' programme. The hospital also provides all the usual care you would expect from a local NHS district general hospital.

The Trust also provides services at [Queen Mary's Hospital in Roehampton](#). These include outpatient rapid diagnostic and treatment facilities, a minor injuries unit, limb fitting services and 70 elderly, intermediate care and rehabilitation beds.

The Trust provides outpatients clinics and diagnostics at [The Nelson Health Centre](#), an innovative healthcare centre which provides a range of services including two GP hubs close to the local community.

Expertise of services in the Trust is well aligned with research focus in the University.



Pan London Foundation School

The Pan London Foundation School's Specialised Foundation Programme (SFP) has been developed for foundation doctors who are interested in an academic career. The SFP at St George's provides an exciting opportunity for foundation doctors to develop research skills in addition to the competencies outlined in the Foundation Programme Curriculum.

Specialised Foundation Programme (SFP) themes for August 2024 at SGUL
12 jobs are available in the following specialty-based themes:

SFP themes	Speciality Academic leads for SFP	Contact details
Clinical Pharmacology	Professor Emma Baker: Dr Fu Liang Ng	ebaker@sgul.ac.uk fng@sgul.ac.uk
Neurosurgery	Mr Michael Hart:	mhart@sgul.ac.uk
Rheumatology	Professor Nidhi Sofat:	nsofat@sgul.ac.uk
Renal Medicine	Professor Debabish Banerjee:	Debasish.Banerjee@stgeorges.nhs.uk
Infectious Diseases	Dr Tihana Bicanic:	tbicanic@sgul.ac.uk
Paediatrics	Dr Charlotte Huddy:	charlotte.huddy@stgeorges.nhs.uk
Primary Care	Dr Imran Rafi: Professor Judith Ibison:	irafi@sgul.ac.uk jibison@sgul.ac.uk
Emergency Medicine	Professor Heather Jarman:	heather.jarman@stgeorges.nhs.uk
Paediatric Orthopaedics	Miss Yael Gelfer:	yael.gelfer@stgeorges.nhs.uk
Vascular Surgery	Mr Mital Desai: Mr Iain Roy:	Mital.Desai@stgeorges.nhs.uk iroy@sgul.ac.uk
Critical Care Medicine	Dr Dagan Lonsdale:	dlonsdal@sgul.ac.uk
Cardiology	Dr Mark Specterman:	mspecter@sgul.ac.uk

Pan London Foundation School

For more information on the Specialised Foundation programme please visit:

<https://foundationprogramme.nhs.uk/programmes/2-year-foundation-programme/specialised-foundation-programme/>

https://london.hee.nhs.uk/sites/default/files/2023_london_suoa_sfp_applicant_guide.pdf

The prospectus can be viewed [HERE \(https://london.hee.nhs.uk/sites/default/files/london_specialised_foundation_programme_-_applicant_guide_v1_-_18-08-2023.pdf\)](https://london.hee.nhs.uk/sites/default/files/london_specialised_foundation_programme_-_applicant_guide_v1_-_18-08-2023.pdf).

Specialised Foundation Programme doctors at St George's have an honorary appointment with the university and will be contacted by SGUL's HR department at the start of the first year of the programme.

Contacts:

FY1 Programme Director – Dr Charlotte Huddy, charlotte.huddy@stgeorges.nhs.uk

FY2 Programme Director – Miss Yael Gelfer, yael.gelfer@stgeorges.nhs.uk.

Funding is available during FY2 for conference/meeting attendance. Please contact yael.gelfer@stgeorges.nhs.uk for details of how to access the funding.

GAT Small Grant Fund = Academic F1 and F2 junior doctors

We receive a fixed annual income to our GAT Small Grant Fund from the Isaac Schapera Research Trust to support research conducted during Specialised Foundation years. The funds can be used for conference/meeting costs. For more details on application criteria please contact yforde@sgul.ac.uk.

Contracts and salaries

NIHR funded Academic Clinical Fellows are employed by an NHS organisation and hold an honorary contract with the university in which they work.

ACFs employed by St George's Trust should contact the Medical Staffing Team with regard to any contract or salary queries in the first instance via:

HRMedicalRecruitment@stgeorges.nhs.uk

SGUL HR department will contact NIHR and HEE funded ACFs to arrange an honorary appointment with the university. Queries should be sent to HRhelp@sgul.ac.uk

NIHR funded Clinical Lecturers are employed by SGUL and hold an honorary contract with St George's Trust. The university's HR department will set up the university contract and arrange for the honorary contract.

Contract queries should be sent to HRhelp@sgul.ac.uk; salary and pension queries to Cara Wright, Payroll and Pensions Manager, at cawright@sgul.ac.uk.

For funding for ACFs see 'Accessing your NIHR bursary' on p9.

Forms and feedback

You will be asked to complete a number of forms during your award eg feedback requests, copy of ARCP outcome. It is important that these are returned promptly. The IAT lead is responsible for holding accurate data on our trainees and NIHR expect us to provide feedback throughout the period of the award along with outcome data.

Organising Research Blocks

As soon as appointment has been confirmed ACFs and CLs should make contact with the Clinical Lead/Training Programme Director, Academic Lead for their specialty and the IAT Lead Professor Sofat to discuss and agree how the research blocks will be organised. The IAT Lead will meet with the trainee, academic supervisor and clinical supervisor at the start of the award to confirm arrangements.

NIHR recognises that these arrangements are for local agreement depending on the specialty circumstances. The key issues are:

- Trainee-centred flexibility with protected time for research to be ensured
- An agreed timetable for research blocks to be drawn up as soon as the ACF/CL appointment has been confirmed
- The timetable should be circulated to clinical/academic supervisors and the IAT Lead.

Mentor

It is an expectation that ACFs and CLs will have a mentor. A mentor is not your line manager or project supervisor. It is an opportunity to engage with a more senior colleague with experience, knowledge and understanding to support your development. Each mentor:mentee relationship is unique and it is appropriate to spend some time considering what skills you would like your mentor to have and what you hope to gain from the experience. A good mentor will give you sound and impartial advice, show you what is possible and help you develop yourself and your career to achieve your goals. Mentoring arrangements will be discussed at the first local academic meeting according to the needs of the trainee and area of work.

Below you will find details of SGUL's Clinical Academic Mentors who can be contacted directly by our trainees:

Tess Harris, Professor of Primary Care Research

Works on public health related research in Primary Care, Member of PHRI

[Website link](#), [email](#)

Jon Friedland

Deputy Vice-Chancellor (Research and Enterprise)

[Website link](#), [email](#)

Tom Harrison

Professor of Infectious Diseases

[Website link](#), [email](#)

Sanjay Sharma

Professor of Cardiology

[Website link](#), [email](#)

Elijah Behr

Professor of Cardiovascular Medicine

[Website link](#), [email](#)

Mary Sheppard

Professor of Cardiac Pathology

[Website link](#), [email](#)

Nidhi Sofat

Professor of Rheumatology, George's Academic Training Lead

[Website link](#), [email](#)

Peter Holt

Professor of Vascular Surgery

[Website link](#), [email](#)

NIHR Academy Mentoring Programme

The NIHR Academy provides postdoctoral members with career development support through its mentoring programme. Please visit the website for details.

Accessing your NIHR bursary

NIHR funded ACFs and CLs have a £1,000 per annum bursary to allow trainees to attend conferences, workshops and research visits that are relevant to their academic training. The bursary cannot be used for consumables.

Before attending a conference/course please send details to the GAT team for approval. Reimbursement is made following attendance/completion and we will provide the necessary claim forms. Original receipts must always accompany the claim form.

Locally funded (NHSE) GP ACFs should contact Dr Imran Rafi regarding bursary access. Locally funded CLs should contact their Research Institute Manager or supervisor regarding local bursary funding:

- Paediatric Infectious Diseases – [Jennifer Lock](#) (Research Institute Manager)
- Vascular Surgery – [Professor Peter Holt](#) (supervisor) and [Nia Watkins](#) (Research Institute Manager)
- Neurosurgery – [Mr Erlick Pereira](#) (supervisor)
- Cardiology – [Nia Watkins](#) (Research Institute Manager)

Expenses should be submitted as soon as possible after they have been incurred. Claims must be made within three months. Approval should be gained from the Finance Director if the claim is over three months old.

Formal research skills training is mandatory for our academic trainees. We offer [PgCert Healthcare Research Skills and Methods](#). Funding is available for NIHR ACFs to undertake this course. Please refer to the section on Research Training Programmes on p20 and contact the GAT team for further information.

Progress and next steps

Supervisors and trainees should meet regularly to discuss progress and issues that are impacting on the trainee's award and well-being. The IAT Lead will arrange an annual meeting with the trainee and supervisors. Please feel free to contact yforde@sgul.ac.uk and nsofat@sgul.ac.uk with queries at any time.

Next step for ACFs

Following completion of an ACF many trainees spend a further three years 'Out of Programme Research' (OOPR) working towards the completion of an MD or PhD by taking up a Clinical Research Training Fellowship (CRTF). Advice on funding bodies and completing fellowship applications should be sought from your supervisor and the IAT lead.

Next step for CLs

It is expected that after two years in the post CLs will have applied for continued research support through senior fellowship applications to NIHR, Wellcome, MRC and other relevant funding bodies. Supervisors should support the trainee in completing applications.

[The Academy of Medical Sciences – Starter Grants for Clinical Lecturers](#)

Starter Grants for Clinical Lecturers offer funding of up to £30,000 to cover the cost of research consumables. The grants allow research-active Clinical Lecturers to gather data to strengthen their bids for longer-term fellowships and funding. Applications should be made via SGUL's Research Office: research@sgul.ac.uk.

Career planning resources

[London HEE – careers unit](#)

[NIHR Funding and Awards](#)

Websites to look at:

- NIHR Research Support Service, London: <https://www.nihr.ac.uk/explore-nihr/support/research-support-service/>
- NIHR Fellowship Programme: <https://www.nihr.ac.uk/explore-nihr/academy-programmes/fellowship-programme.htm>
- NIHR Applying for funding: <https://www.nihr.ac.uk/researchers/apply-for-funding/>

Support with writing a successful grant or fellowship application: <https://pn.bmj.com/content/15/6/474>

The Andrew Derrington publications are a good read:

<http://www.parkerderrington.com/wp-content/uploads/2018/06/HandoutGrantsFellowsips-1.>

St. George's Library (situated on 1st Floor Hunter Wing) offers library services to all Trust staff in support of evidence-based high quality care, improvement, research, education and personal development by providing:

- Access to a range of [electronic information resources](#) via [NHS OpenAthens](#) and [training](#) on how to effectively use them
- Literature searches to support clinical activity and decision making via our [Clinical and Research Enquiry Service \(CARES\)](#)
- Dedicated study and work space, including 24-hour access to study spaces, computing, scanning and copying services. See [Using the Library](#) for details
- Access to [journals, books, e-learning material and evidence-based resources](#)
- [Interlibrary loan](#) and document supply service
- Current awareness services to help you keep up to date with developments in your speciality

The level of remote/off-site access to journals depends on whether a trainee has a 'sgul.ac.uk' log-in, but all trainees have full access to resources from an SGUL computer once they have registered with the library. To register fill in [this online registration form](#) or visit in person to fill in a registration form.

To find out more view our [NHS Library Essentials guide](#), visit our [website](#) or contact Ayo Ogundipe on 020 8725 5466 or liaison@sgul.ac.uk

Public and Community Engagement at St George's

Public Engagement is a strategic priority for St George's. It is an essential part of research and, increasingly, education and clinical provision too. St George's encourages public engagement because we think it is the right thing to do – universities are publicly funded institutions that are part of, and accountable to, the community with a duty to share what they do with the public. In addition, funding to the institution or to individual researchers is increasingly dependent on the inclusion of public engagement.

The Public Engagement (PE) Team supports all areas of public engagement, from science communication and public talks, through to advising on public and patient involvement in funding applications. If you'd like to talk to us, please send us an email at pe@sgul.ac.uk, alternatively you can reach us directly using our contact details below:

- [Carol Shiels](#), Lead for Public and Civic Engagement
- [Duncan Barron](#), Patient and Public Involvement Lead
- [Constance Maurer](#) and [Martin Bird](#), Pint of Science Leads
- [Daniel Meijles](#), Spotlight on Science Lead

Below we have included a range of resources and support available to help you get involved in public engagement. Opportunities are constantly being updated so please make sure you join the St George's [Public Engagement Network on MS Teams](#) to be kept informed.

Support for public engagement

- Public Engagement Training: In 2024 we are planning a monthly series of networking and training events starting on the 25 January 2024 with a workshop on Mastering TED style talks for researchers with the Director of Communications and Engagement Rachel Wheely. Full details of the sessions and how to sign up will be announced soon via the PE Network on MS Teams and on the St George's Weekly Newsletter.
- Try out the new online Guide to Public Engagement on Canvas: Featuring guidance, videos and case studies, click here to self-enrol and get started.
- St George's Public Engagement Seed Funding: Funding is available to support researchers in developing and delivering their own public engagement or PPI activities and events. The next round will be in early 2024 and you can read more about how to apply here.
- Advice: Get in touch with us at pe@sgul.ac.uk for bespoke advice or just to find out how you can get involved in public engagement.

Public and Community Engagement at St George's

Below we have included a range of resources and support available to help you get involved in public engagement. Opportunities are constantly being updated so please make sure you join the St George's [Public Engagement Network on MS Teams](#) to be kept informed.

Opportunities in public engagement with research

There are many ways you get started in public engagement at St George's, below we have highlighted some of our regular events and opportunities.

- Join the St George's [STEM Outreach Network on MS Teams](#). We are working with the STEM Network to coordinate our activities in STEM Outreach. Please join our network and let us know what events or activities you are involved in.
- Talk about your research at the next [Pint of Science](#) event in May 2024. St George's researchers will be going back into the community to give a series of talks on our research in a local venue. The organisers for this year, [Constance Maurer](#) and [Martin Bird](#), are currently recruiting speakers, so get in touch if you'd like to get involved, or if you'd like to volunteer to help during the event.
- Take part in the [Science Museum Lates](#) programme of events. This is a great way to get started and talk to a friendly audience about your research, have a look at the themes for events in 2024 and let us know if you'd like to get involved.
- Give a talk at HMP Wandsworth. [Inside Science](#) is a public engagement in science initiative between St. George's University of London and HMP Wandsworth to raise awareness and encourage interest and conversation in science. If you would like to present a topic about which you are passionate, please contact [Julian Ma](#) directly. This is an excellent opportunity for first time or experienced public engagers alike.
- Get involved with community engagement in the St George's [Pathology Museum](#). The Museum will be holding regular public events in 2024 and researchers at all career levels are invited to participate and gain experience in talking about their research to a lay audience. Get in touch with [Carol Shiels](#) directly if you'd like to get involved.
- Run an event in the Public Engagement Space. We have a new and exciting space that you can use for pop-up events on campus. Read our guide [here](#) to help you get started.
- Take part in the University's flagship Spotlight on Science public talks series. Get in touch with [Daniel Meijles](#) if you'd like to contribute to future events.
- Become a tutor on the [Brilliant Club Scholars programme](#). The St George's Widening Participation Team works with the Brilliant Club to offer PhD students and researchers an exciting opportunity to receive expert training and gain teaching experience.

Public and Community Engagement at St George's

Support for Patient and Public Involvement (PPI)

Public engagement that feeds directly into how we identify, prioritise, design, conduct and disseminate research is often referred to as Patient and Public Involvement (PPI). PPI is a way of increasing the quality, relevance and impact of research, and is now a compulsory aspect for many research funders, including the Department of Health's National Institute for Health Research (NIHR).

The PE Team can help support your engagement activities through PPI training to help augment understanding of what PPI is and how to undertake it. The research focus is on how to best enable PPI to enhance the identification, prioritisation, design and conduct of health and social care research. All PPI training includes insights and expert hands-on experience and knowledge from patients, carers and service users. The PE Team can also help with lay summaries and recruiting patients and members of the public to be part of a research advisory group and/or service user and carer-forums.

Please get in touch with our PPI Lead, [Duncan Barron](#), if you'd like more advice or expertise in PPI.

PPI Resources

- The National Institute for Health Research (NIHR) [Briefing notes for researchers](#) and the Research Design Services' [A brief guide to public involvement in funding applications](#) provide a helpful introductory overview of PPI.
- NIHR's [Standards for Public Involvement](#) are a useful guide on how to improve the quality of your PPI.
- Further PPI resources are listed on the following websites and webpages:
 1. [NIHR's PPI resources webpage](#)
 2. [Health Research Authority \(HRA\) PPI pages](#)
 3. [Learning for Involvement website*](#)

*Learning for Involvement is run by the NIHR Centre for Engagement and Dissemination (CED). CED has replaced NIHR INVOLVE who were previously funded by the NIHR to promote PPI in health and social care research. INVOLVE produced a wealth of PPI resources that [are still online](#). However, please refer to the websites and webpages above to keep up-to-date.

Further reading

- Read the [Vitae Researcher Development Framework](#) and understand why public and civic engagement should be part of every researcher's skillset.
- Read more about engaging the public with your research through the [National Co-ordinating Centre for Public Engagement](#) and through [NIHR INVOLVE](#).
- Read about the latest public engagement research from [Research for All](#) – a journal aiming to raise the quality of engaged research.

Researchfish

Researchfish is an online system used by several major UK research funders to gather information on the outputs, outcomes and impacts of research that they have funded. Researchers are given an account in Researchfish through which they are required to provide information on the outcomes of their funded research.

During your award and for at least five years afterwards you will be contacted by NIHR and SGUL's Joint Research and Enterprise Service with reminders to provide an annual Researchfish submission. NIHR have a sanctions policy for researchers who fails to provide an annual submission:

- The researcher or trainee may be ineligible for consideration for further NIHR awards.
- Payments may be withheld.

Higher Degrees

Trainees wanting to discuss the suitability of their project for an MDRes/PhD and information on applying for a higher degree through the Research Institutes should contact:

Institute	Postgraduate Coordinator
Molecular and Clinical Sciences Institute	Dr Atticus Hainsworth (MPhil/PhD students) Dr Bridget Bax (MPhil/PhD students) Professor Michael Papadakis (MD(Res) students) Professor Derek Macallan (for any MD(Res) projects that Professor Papadakis is on the supervisory team of)
Institute of Infection and Immunity Research Institute	Dr Kai Hilpert (MPhil/PhD students) Professor Derek Macallan (MD(Res) students) Professor Michael Papadakis (for any MD(Res) projects that Professor Macallan is on the supervisory team of)
Population Health Research Institute	Professor Julia Critchley (MPhil/PhD students)
Institute of Medical and Biomedical Education	Dr James Erskine (MPhil/PhD students) Dr Florencia Cavodeassi (MPhil/PhD students) Professor Derek Macallan or Professor Michael Papadakis (MD(Res) students)

Higher Degrees

For all general enquiries regarding the Graduate School, please email researchdegrees@sgul.ac.uk.

Graduate school team:

Name and role	Contact email
Dr Carwyn Rhys Hooper (Head of the Graduate School)	chooper@sgul.ac.uk
Dr Mark Bodman-Smith (Deputy Head of the Graduate School (Research Degrees))	mbodmans@sgul.ac.uk
Dr Kate Everett-Korn (Deputy Head of the Graduate School (Taught Programmes))	keverett@sgul.ac.uk
Mrs Emma Embleton (Head of Postgraduate Administration)	edyer@sgul.ac.uk
Miss Derilyn Frusher (Programme Manager (Research Degrees))	dfrusher@sgul.ac.uk
Mr Stephen Ovens (Research Degree Administrator for exams and GSSP)	sovens@sgul.ac.uk

Joint Research and Enterprise Service (JRES)

Joint Research and Enterprise Services (JRES) provides professional management and facilitation of research and enterprise, supporting academic, clinicians, collaborators and sponsors across both St George's, University of London and St George's Healthcare NHS Trust.

The JRES is organised in to three teams of expertise:

Research Funding research@sgul.ac.uk

This team provides support and advice on funding opportunities, research application and financial management issues for St George's, as well as research strategy. This covers research funding opportunities, grant application costing and advice, Research Excellence Framework support, and the management of research awards.

Research Governance and Delivery researchgovernance@sgul.ac.uk

Split into two sub-teams Research Governance and Facilitation and Ethics and Regulatory Assurance, this area of JRES supports and facilitates the set-up, governance and delivery of clinical research. This includes facilitating new clinical research opportunities, sponsorship, regulatory approvals, monitoring and auditing.

Enterprise and Innovation enterprise@sgul.ac.uk

This team provides support in research enterprise and innovation, as well as contracts. This involves the protection and commercial exploitation of St George's innovations, consultancy support for University academics, contract negotiation, and advice on funding applications and other commercial opportunities.

Ethics

Research Ethics Committees (or Ethical Review Boards) help researchers consider and prepare for ethical issues that their research might raise.

Find out more about research ethics at: <https://www.sgul.ac.uk/research/research-ethics>

And about the SGUL Research Ethics Committee at: <https://www.sgul.ac.uk/research/research-ethics/st-georges-research-ethics-committee>

If you have any questions, please email the Research Ethics and Integrity Officer at sgulREC@sgul.ac.uk

Clinical Academic Groups (CAGs)

Neurosciences Clinical Academic Group

Neurosciences research at St George's covers a broad range from molecular neuroscience, to imaging, psychology and linguistics research, to clinical trials of physiotherapy, drugs and surgical and endovascular techniques. Most clinical areas in the Neuroscience Directorate in the hospital are research active, while the Neurosciences Research Centre at SGUL includes nationally and internationally prominent investigators: <https://www.sgul.ac.uk/about/our-institutes/molecular-and-clinical-sciences/research-centres/neuroscience-research-centre>. Across the University and the hospital there is a thriving academic educational programme including regular journal clubs and research seminars.

Trainees interested in research opportunities can contact:

- Dr Jeremy Isaacs, Consultant Neurologist and Neurosciences CAG Director: jeremy.isaacs@nhs.net
- Dr Anthony Pereira, Consultant Neurologist and Neurology Training Programme Director: anthony.pereira@stgeorges.nhs.uk
- Professor Franklyn Howe, Professor of Magnetic Resonance Imaging and head of the Neurosciences Research Centre: howefa@sgul.ac.uk

Genomics Clinical Academic Group

The genomics-clinical academic group aims to enhance collaboration between St George's University, London and the Trust, to improve the patient experience through genomic research, education and training. If you would like to become a member of the group, please email generaladmin@sgul.ac.uk.

Infection and Immunity Clinical Academic Group

The Infection & Immunity Clinical Academic group brings together basic scientists and clinical academics from the Institute for Infection and Immunity (SGUL) and Clinicians (including doctors and allied health professionals) from the Trust with a specialist interest in infection, immunity or the microbiome, with a view to promoting and supporting translational research across the two institutions.

- Contact: Tihana Bicanic (Director) at tbicanic@sgul.ac.uk
- Ava Chiu (administrator) at achiu@sgul.ac.uk

Trainees interested in research opportunities can contact:

- Professor Julian Ma jma@sgul.ac.uk
- Professor Thomas Harrison tharriso@sgul.ac.uk

Clinical Academic Groups (CAGs)

The Cardiovascular Clinical Academic Group

The Cardiovascular Clinical Academic Group (CV-CAG) is a University and Trust umbrella body with the aim of enhancing research, education and training for scientists, clinicians and allied health professionals across both organisations. It encompasses both the Sections of Cardiology and Vascular Biology in the University and the Cardiology and Vascular Surgery Care Groups in the Trust. There is a particular focus on supporting the development of translational research leveraging the strengths of our scientists and the substantial Trust clinical activity. Patient input is a vital component to the overall strategy of the CV-CAG and the Research and Education Working Groups function to support the development of the CAG's objectives. Encouragement of young researchers, the development of their ideas, grant applications and manuscripts is another priority through our Early Research Meeting. This complements the CAG objective to increase the number of clinical academic trainees in the CV-CAG, and enhancing the support available to them as well as guiding them to research opportunities.

For information on research opportunities contact:

Name and role	Contact email
Professor Elijah Behr, CAG Director and Section Head, Cardiology	ebehr@sgul.ac.uk
Dr Maite Tome-Esteban, Lead of Research Working Group, Cardiology	mtome@sgul.ac.uk
Dr Daniel Meijles, Co-lead of Research Working Group, Vascular Biology	dmeijles@sgul.ac.uk
Professor Iain Greenwood, Section Head, Vascular Biology	greenwood@sgul.ac.uk
Professor Sanjay Sharma, Deputy Section Head, Cardiology	sasharma@sgul.ac.uk
Professor Peter Holt, Vascular Surgery	pholt@sgul.ac.uk
Professor Mary Sheppard, Deputy Section Head, Cardiology	msheddar@sgul.ac.uk

Research Training Programme

PgCert Healthcare Research Skills and Methods

This Postgraduate Certificate is a flexible, modular, part-time course, over a minimum of ten months and maximum three years, focusing on knowledge, behaviours and attributes required to become a successful healthcare researcher, using the Researcher Development Framework* as a foundation:

- Knowledge and Techniques
- Personal Effectiveness
- Engagement, Influence & Impact
- Research Governance and Organisation
- Independent negotiated learning for a research project

*<https://www.vitae.ac.uk/researchers-professional-development/about-the-vitae-researcher-development-framework>

Learning Aims

- 1) To provide an excellent foundation for critical understanding and evaluation of the design, conduct, dissemination and funding of research (from pre-clinical to healthcare);
- 2) To equip participants with the knowledge, skills and attitudes to enable them to commission or undertake their own original research and become effective healthcare researchers.

Further information can be found at <https://www.sgul.ac.uk/study/courses/healthcare-research-skills-and-methods#about>

The PgCert Healthcare Research Skills and Methods is an integral part of ACFs' academic skills development. It is therefore mandatory that all ACFs starting on the IAT programme enrol on this programme.

Postgraduate Certificate in Healthcare and Biomedical Education

The Healthcare and Biomedical Education PgCert is a flexible course that promotes and facilitates the professional development of participants as teachers through experiential learning based on their own practice.

Details can be found at <https://www.sgul.ac.uk/about/our-education-centres/centre-for-innovation-and-development-in-education/postgraduate-education>

Research Institute Seminars

The three research institutes arrange weekly and monthly seminars with both local and external speakers. Please email [Angela Mason](mailto:Angela.Mason@sgul.ac.uk) if you would like to receive the weekly seminar bulletin.

Genomic Medicine PgCert/PgDip/MSc

The Genomic Medicine programme is suitable for doctors, healthcare professionals and students with an interest in genetics and genomics. Funding is available for staff working in the NHS.

You will learn how recent technological advances have transformed how genomic data is generated, analysed and presented, and its relevance to a range of clinical scenarios, as well as how to handle such big data.

This is a flexible programme is structured to provide options for PgCert and PgDip awards as well as the MSc or, if you prefer, modular study towards your Continuous Personal and Professional Development (CPPD). Details of SGUL's Genomic Medicine training programme can be found at <https://www.sgul.ac.uk/study/courses/genomic-medicine>.

UPDATE: If you work for the NHS then you are eligible for funding from Health Education England for up to four taught modules for 2023-24. [Visit the Genomics Education Programme website](#) for more information.

MSc Applied Biomedical Science

The MSc Applied Biomedical Science will help you develop into a confident and self-reliant researcher who is skilled at self-directed learning, laboratory investigation, data analysis and scientific communication.

Details of SGUL's Applied Biomedical Science training programme can be found here: <https://www.sgul.ac.uk/study/courses/translational-medicine>

ResearchAware

The George's Academic Training team run a series of research training seminars aimed at St George's staff called [ResearchAware \(https://www.sgul.ac.uk/study/professional-education/st-georges-academic-training/researchaware-skills-methods\)](https://www.sgul.ac.uk/study/professional-education/st-georges-academic-training/researchaware-skills-methods).

The sessions are open to all and are relevant to clinicians and allied health professionals who are:

- interested in conducting research and developing their own projects
- active researchers who want to build, broaden or refresh their knowledge.

Each stand-alone session introduces skills and considerations for healthcare research involvement. They are delivered by experts across St Georges, University of London.

Good Clinical Practice (GCP) and Valid Informed Consent Training

As part of our role within the NIHR, there is access to free of charge, CPD accredited, face to face and online e-learning courses from CRN Learn in:

1) Good Clinical Practice (GCP)

The international ethical, scientific and practical standard to which all clinical research is GCP training conducted. Compliance with GCP provides public assurance that the rights, safety and wellbeing of research participants are protected and that research data are reliable.

There are specific GCP courses in:

- a) Introduction to GCP in Primary Care
- b) Introduction to GCP in Secondary Care
- c) Introduction to GCP for IMP Management (Pharmacy)
- d) Introduction to GCP in General Dental Practice
- e) GCP Refresher

2) GCP-related Valid Informed Consent:

- a) Informed Consent in Paediatric Research
- b) Informed Consent with Adults Lacking Capacity

3) Building Research Partnerships

A workshop aimed to outline the different types of research methods and terminology used in research, how patients, carers and researchers can work together to support the delivery of research that is patient focused, as well as exploring the issues related to becoming and being involved in research.

The organisations listed below are automatically eligible for access to CRN Learn:

ac.uk	nhs.uk
cgl.org.uk	-nhslothian.scot.nhs.uk
ct.catapult.org.uk	nice.org.uk
dh.gsi.gov.uk	nihr.ac.uk
doctors.org	nweh.co.uk
doctors.org.uk	paconsulting.com
hscni.net	phe.gov.uk
nhs.net	rirl.org
nhs.org.uk	

If you are directly employed by one of these organisations you simply need to complete the [form on their website](#) to sign up to the system.

Useful online resources

Statistics

[Statistics Guide for Research Grant Applicants](#). Authors (in alphabetical order) Bland JM, Butland BK, Peacock JL, Poloniecki J, Reid F, Sedgwick P Department of Public Health Sciences, St George's Hospital Medical School Cranmer Terrace, London SW17 0RE.

This handbook was funded by the South East Regional Office (SERO) Research and Knowledge Management Directorate and is targeted at those applying for research funding, from any source.

You can find more support learning of core statistical concepts at the University of Southampton e-learning site: https://www.med.soton.ac.uk/stats_eLearning/index.html

Useful links

[Research Support Service London](#)

[SGUL Research Day](#)

[NIHR Academy](#)

Appendix One

List of Research Fellowships

This table provides a list of competitive research fellowships, presented in alphabetical order by funder, that have been confirmed by the funder to require research independence. This list is intended to guide institutions when developing their criteria to identify independent researchers. It should not be taken to be exhaustive and the funding bodies recognise that many relevant fellowship schemes are not captured, including research fellowships funded by HEIs, which may require research independence.

Funder	Fellowship scheme
AHRC	AHRC Leadership Fellowships - Early Career Researchers
AHRC	AHRC Leadership Fellowships
BBSRC	BBSRC David Phillips Fellowships
BBSRC	BBSRC Future Leader Fellowships (from 2018 known as BBSRC Discovery Fellowships)
British Academy	BA/Leverhulme Senior Research Fellowships
British Academy	British Academy Postdoctoral Fellowships
British Academy	JSPS Postdoctoral Fellowships
British Academy	Mid-Career Fellowships
British Academy	Newton Advanced Fellowships
British Academy	Newton International Fellowships
British Academy	Wolfson Research Professorships
British Heart Foundation	Career Re-entry Research Fellowships
British Heart Foundation	Clinical Research Leave Fellowships
British Heart Foundation	BHF-Fulbright Commission Scholar Awards
British Heart Foundation	Intermediate Basic Science Research Fellowships
British Heart Foundation	Intermediate Clinical Research Fellowships
British Heart Foundation	Senior Basic Science Research Fellowships
British Heart Foundation	Senior Clinical Research Fellowships

Appendix One

Funder	Fellowship scheme
British Heart Foundation	Springboard Award for Biomedical Researchers
British Heart Foundation	Starter Grants for Clinical Lecturers
Cancer Research UK	Advanced Clinician Scientist Fellowship
Cancer Research UK	Career Development Fellowship
Cancer Research UK	Career Establishment Award
Cancer Research UK	Senior Cancer Research Fellowship
EPSRC	EPSRC Early Career Fellowship
EPSRC	EPSRC Established Career Fellowship
EPSRC	EPSRC Postdoctoral Fellowship*
ESRC	ESRC Future Cities Catapult Fellowship
ESRC	ESRC Future Leaders Grant
ESRC	ESRC/Turing Fellowships
ESRC/URKI	Early Career Researcher Innovation Fellowships
European Research Council	ERC Advanced Grants
European Research Council	ERC Consolidator Grants
European Research Council	ERC Starting Grants
Health Education England	Integrated Clinical Academic Programme Clinical Lectureship*
Health Education England	Integrated Clinical Academic Programme Senior Clinical Lectureship
Leverhulme Trust	Early Career Fellowship
Leverhulme Trust	Research Fellowship
Leverhulme Trust	Emeritus Fellowship
Leverhulme Trust	Major Research Fellowship

Appendix One

Funder	Fellowship scheme
Leverhulme Trust	International Academic Fellowship
MRC	MRC Career Development Awards*
MRC	MRC New Investigator Research Grants (Non-clinical)*
MRC	MRC New Investigator Research Grants (Clinical)*
MRC	MRC Clinician Scientist Fellowships*
MRC	Senior Non-Clinical Fellowships
MRC	Senior Clinical Fellowships
NC3R	David Sainsbury Fellowship
NC3R	Training Fellowship
NERC	Independent Research Fellowships
NERC/UKRI	Industrial Innovation Fellowships
NERC/UKRI	Industrial Mobility Fellowships
NIHR	Advanced Fellowship*
NIHR	Career Development Fellowship
NIHR	Clinical Lectureships*
NIHR	Clinician Scientist*
NIHR	Post-Doctoral Fellowship*
NIHR	Research Professorships

* Those asterisked support the transition to independence. Applicants should demonstrate readiness to become independent and the award enables them to become so. It could be argued those at the start of an award are not 'independent' yet, but those well in the award may be.

Appendix Two